



2021 PMP STREET & UTILITY IMPROVEMENTS

PROJECT NEWSLETTER



Project
Schedule



Access &
Parking



Safety



Contact
Info



Project
Map

PROJECT SCHEDULE



The contractor's phased construction schedule is proposed as shown in the map on the last page of this newsletter. This schedule is subject to change based on weather, contractor's schedule, or other unforeseen conditions. The following is an overview of the earlier/upcoming phases of the project:

Week of August 9

- Utility work is complete throughout the project area.
- Street grading will occur on Jerrold (Phase 2).
- Topsoil installation may begin on Glenpaul (Phases 1A & 1B).
- Asphalt driveways will be paved on Glenapul (Phases 1A & 1B).
- The existing pavement will be reclaimed on Edgewater and the west cul-de-sac of Jerrold (Phases 4A & 4B) on August 12.

Later in August

- Street grading will occur on Prior Ave (Phase 3).
- Concrete curb and gutter and driveway aprons will be installed on Jerrold (Phase 2) and Prior Ave (Phase 3).
- Sod will be installed on Glenpaul (Phases 1A & 1B).
- Trenchless rehab for the sanitary sewer on Prior Ave (Phase 3) will occur.
- The remainder of spot curb replacement will occur on Edgewater and Jerrold (Phases 4A & 4B).
- Asphalt paving will occur on Edgewater and the west cul-de-sac of Jerrold (Phases 4A & 4B).

September

- Asphalt paving will occur on Jerrold and Prior (Phases 2 and 3).
- Restoration work behind the curb, including sod installation) will begin on Jerrold and Prior (Phases 2 and 3).
- Trees will be planted to replace the trees that were removed throughout the project area.
- Punch list and clean-up work will occur.
- The final layer of asphalt will be paved in late September or early October.

ACCESS & PARKING



The construction process results in a great product at its completion, but can test one's patience along its course. While the negatives of construction are in many ways unavoidable, the City aims to reduce the burden through working with the City's contractor to minimize disruption, routine mailings and other communication, and on-site assistance for residents.

When the street and utilities are under construction, the contractor will need all of the space in the street possible. Therefore, parking will not be allowed on the project area streets under construction during the working hours. Access to driveways will be provided as much as possible. Temporary access restrictions should be anticipated during the work day. The project team understands the need for access to each property, therefore the streets will be temporarily restored at the end of each work day and access to private driveways will generally be available each night.

During street & utility reconstruction, access conditions are usually most challenging after rainfall. Heavy traffic over muddy streets makes conditions worse. Residents will be encouraged to drive on paved roadways whenever that alternative exists.

Typical working hours for the project will be 7 a.m. to 7 p.m., Monday through Friday, and some Saturdays if necessary. No work is allowed on Sundays or holidays.

Trash & Recycling service will continue throughout the duration of the project on your normally scheduled service day. Please place your bins at the end of your driveway like normal, as early as possible or the night before your scheduled pickup day. Trash & Recycling pickup may be earlier than normal to complete the pickup before construction starts if possible. The Contractor may also move your bins to an accessible location at the end of the block if the garbage truck cannot access your property for any reason. Bins will then be returned to your property by the end of the day.

Mail service will also continue throughout the project. Temporary mailboxes will be set up in the neighborhood as necessary to allow for delivery if your normal mailbox is not accessible during construction. Residents will be notified when temporary mailboxes will be required and where they will be located. Temporary mailboxes for Glenpaul and Jerrold properties are currently set up on Prior Ave, between County Rd D and Glenpaul.

'No Parking' signs will be posted at the entrances to the neighborhood during the State Fair to keep non-residents from parking in the neighborhood. However, residents may still park on the neighborhood streets during this time.



SAFETY

The contractor will do everything they can to make the project area safe for residents. However, residents should be aware of their surroundings when walking or driving near construction equipment. The City asks that residents keep their distance from construction equipment in use and utility trenches. There are also materials that can cause harm if caution is not used such as hot asphalt pavement immediately after being placed. Please keep children and pets away from construction activity and open trenches as they might not be aware of the dangers. If you see anything that you feel is unsafe, please do not hesitate to call **Brian Schmit**.



CONTACT AND WEBSITE INFO

Brian Schmit, of Bolton & Menk, Inc., is the Construction Observer for the project and will be the main point of contact for residents during construction. He can be reached at **(612)-368-1228** or brian.schmit@bolton-menk.com

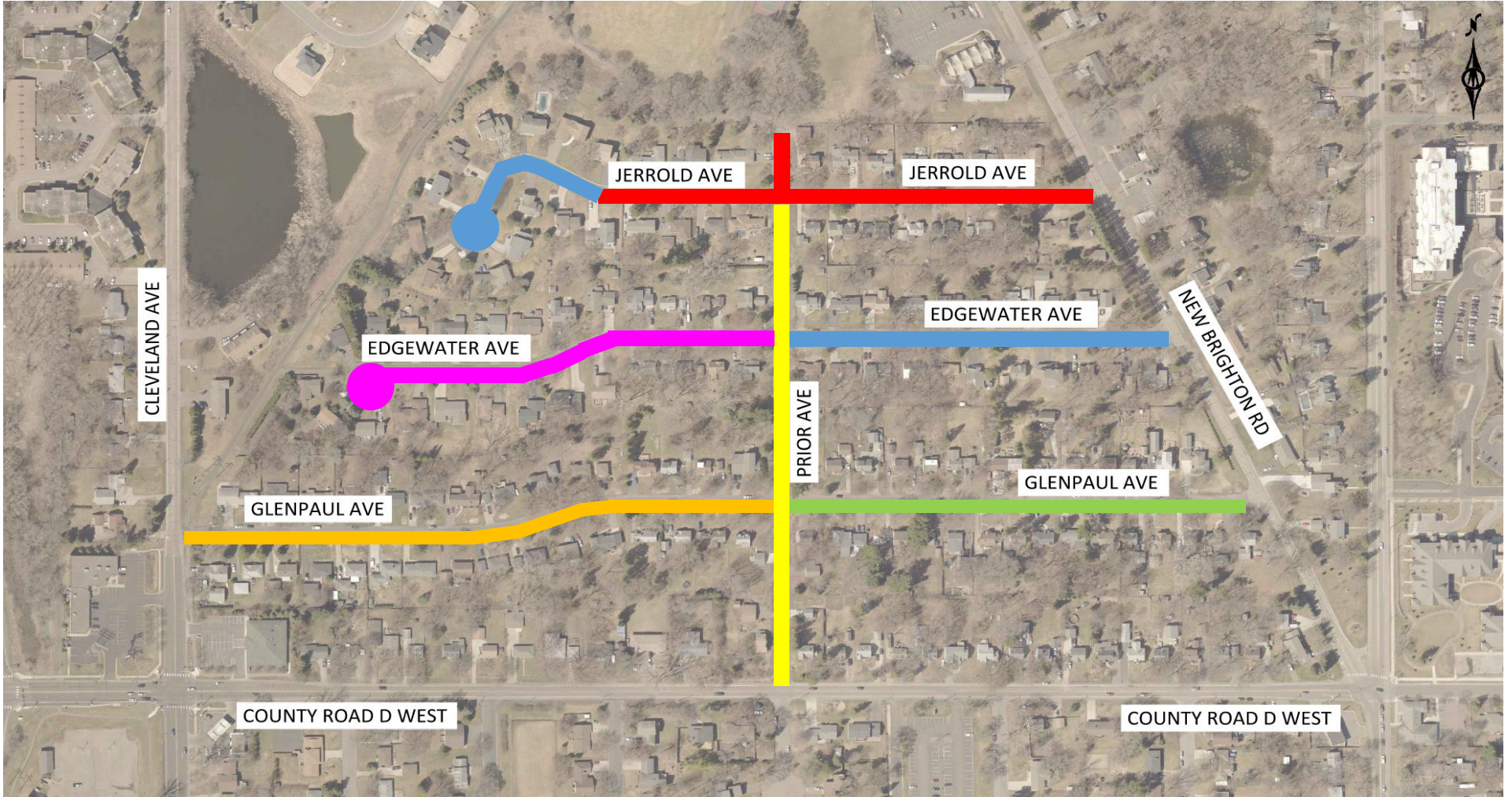
Nick Amatuccio, of Bolton & Menk, Inc., is the Project Engineer overseeing the construction process and will serve as one of the main resident contacts. He can be reached at **(612)-965-3926** or nickam@bolton-menk.com

David Swearingen is the Interim Public Works Director for the City of Arden Hills and will be the main contact at the City for this project. He can be reached at **(651) 792-7847** or dswearingen@cityofardenhills.org

Website: The website will be updated weekly with the latest project info throughout construction. **Residents can sign up for text and email updates on the website.** The site URL is

<https://www.cityofardenhills.org/1007/2021-PMP-Street-and-Utility-Improvements>

PROJECT PHASING MAP



PHASE 1A
MID JUNE – LATE AUGUST

PHASE 1B
MID JUNE – LATE AUGUST

PHASE 2
MID JULY – MID-SEPTEMBER

PHASE 3
MID AUGUST – MID-SEPTEMBER

PHASE 4A
MID JULY – LATE AUGUST

PHASE 4B
MID AUGUST – LATE AUGUST

**Final paving in Late September or Early October for all Phases*