



April 17, 2020

RE: PC# 18-014: AMENDED PLANNED UNIT DEVELOPMENT FOR MOUNDS VIEW HIGH SCHOOL AT 1900 LAKE VALENTINE ROAD

Dear Property Owner:

Mounds View School District has submitted an application for an Amended Planned Unit Development to make roadway and pedestrian improvements to Lake Valentine Road adjacent to Mounds View High School. You are being notified because your property is within 1,000 feet of the project. This notice is sent to encourage your review of the application materials and participation in this review process. In May 2019, the City Council approved a planning case for building and site improvements at Mounds View High School. The City Council approval included conditions that the School District perform a traffic and pedestrian study and implement safety measures to address the significant increase in pedestrian crossings on Lake Valentine Road by students using the parking lot north of the school building.

The traffic and pedestrian study has resulted in recommended improvements along Lake Valentine Road adjacent to the school. A summary of the recommended improvements is provided with this notification and can be found on our City website under the *Mounds View Public Schools* section at:

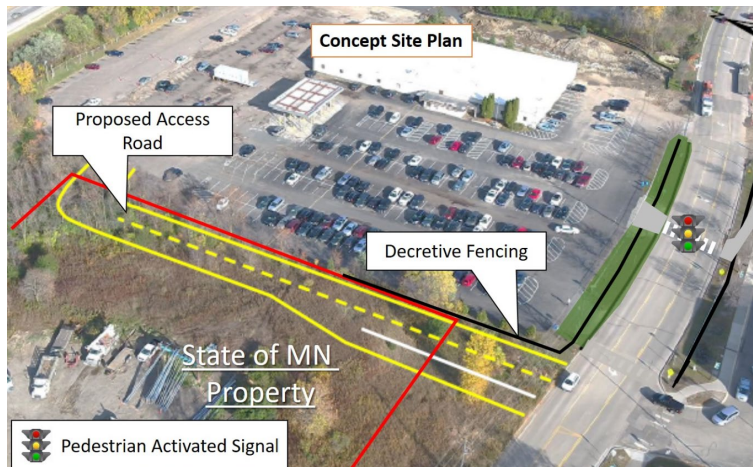
www.cityofardenhills.org/400/Development-Projects

The City Council will consider this request at their Monday, April 27, 2020 meeting at 7:00 p.m. See our website for how meetings will occur, but you are invited to monitor the meeting electronically on our City website or on Channel 16. Due to COVID-19 and social distancing, the normal Public Hearing format has changed, written comments are preferred and can be mailed to City Hall or emailed to planning@cityofardenhills.org. All comments received will be provided to the Councilmembers prior to the meeting and entered into the record. Comments may also be made during the meeting at the appropriate time using the Zoom platform at <https://zoom.us/j/95240032530>. Instructions for how to participate can also be found on our website. A report evaluating this application will be available by request for viewing at City Hall and online at www.cityofardenhills.org/AgendaCenter prior to the City Council meeting.

If you have any questions or concerns please contact:

Mike Mrosła
Community Development Manager/City Planner
651-792-7822 or mmrosla@cityofardenhills.org

Todd Blomstrom
Public Works Director/City Engineer
651-792-7846 or tblomstrom@cityofardenhills.org



- School Speed Zone – Establishment of a school zone speed limit of 25 mile per hour for a one (1) hour period spanning the school start time and a one (1) hour period spanning the school release time for Mounds View High School. At its February 10, 2020 meeting, the City Council approved the school speed zone. Speed zone signage is anticipated to be installed in the spring of 2020.
- Realignment of the west parking lot entrance to align with the west school site entrance on the south side of Lake Valentine Road (Pick-up / Drop-off Access). The School District will need to negotiate to complete an easement or property acquisition from the adjacent parcel owned by State of Minnesota to accommodate the realignment of the west parking lot entrance. The state has been notified and is reviewing. Please note: Final length of the access road may vary depending on agreements between parties.
- Turn Lane - Installation of a 150-ft long exclusive right turn lane for eastbound Lake Valentine Road at the pick-up / drop-off access (south side of street).
- Fencing - Installation of perimeter fencing to guide students, staff and visitors to the controlled crossing.
- Installation of a centralized traffic signal controlled pedestrian crossing at the location generally depicted, along with a small raised median and street light at the new crossing.



Example of a potential crossing signal. Final design may vary.

- Elimination of eastbound left turn movements at the east parking lot access upon completing the realignment of the west parking lot entrance.
- Turn Lane - Installation of a 150-ft long exclusive right turn lane for westbound Lake Valentine Road at the east parking lot access (north side of street).
- Sidewalk - Installation of sidewalk along the north side of Lake Valentine Road between the east parking lot entrance and Janet Court and new sidewalk connecting the crosswalk to the school entrance area.