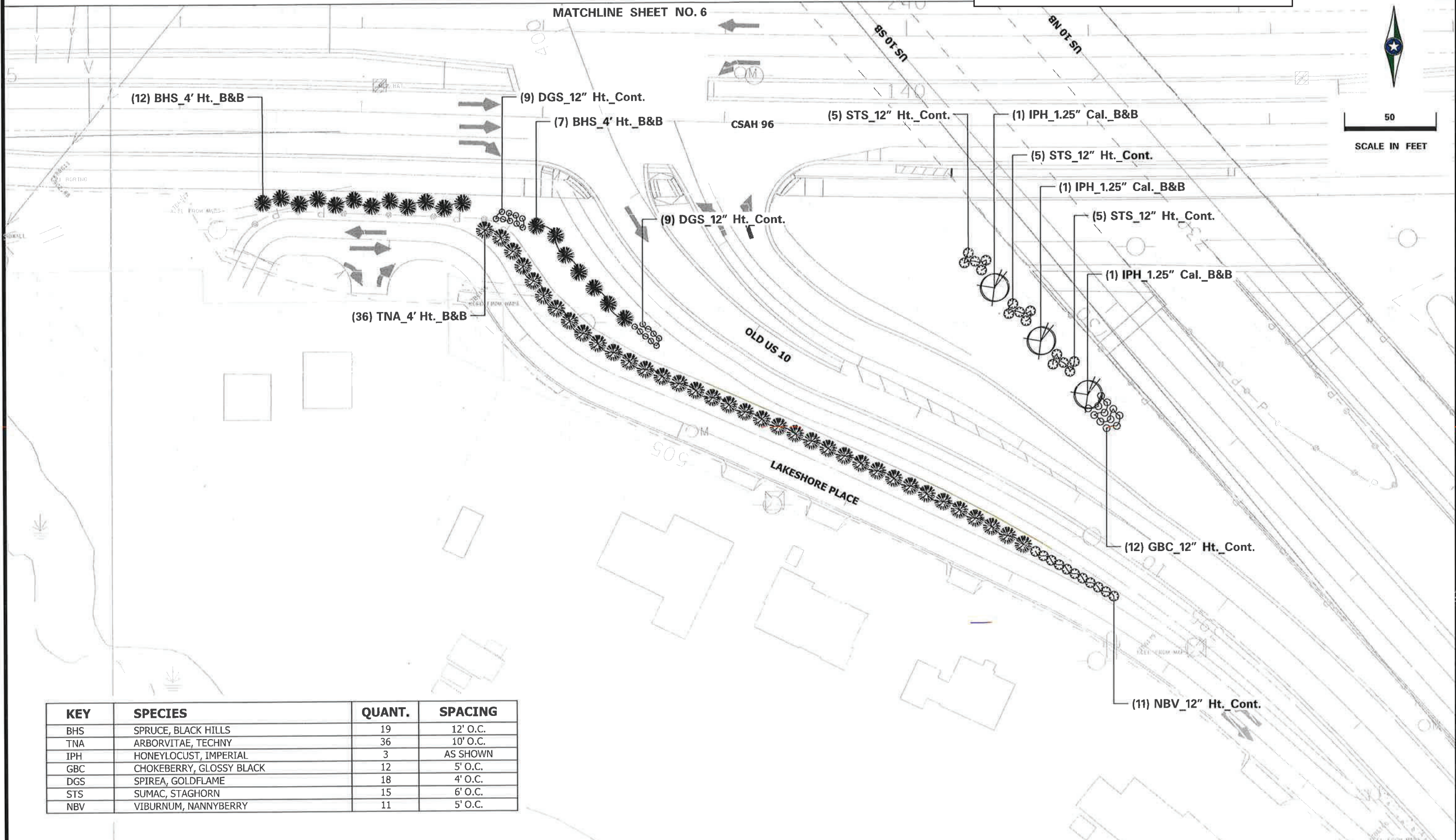




50
SCALE IN FEET



| KEY | SPECIES | QUANT. | SPACING |
|-----|--------------------------|--------|----------|
| BHS | SPRUCE, BLACK HILLS | 19 | 12' O.C. |
| TNA | ARBORVITAE, TECHN | 36 | 10' O.C. |
| IPH | HONEYLOCUST, IMPERIAL | 3 | AS SHOWN |
| GBC | CHOKEBERRY, GLOSSY BLACK | 12 | 5' O.C. |
| DGS | SPIREA, GOLDFLAME | 18 | 4' O.C. |
| STS | SUMAC, STAGHORN | 15 | 6' O.C. |
| NBV | VIBURNUM, NANNYBERRY | 11 | 5' O.C. |