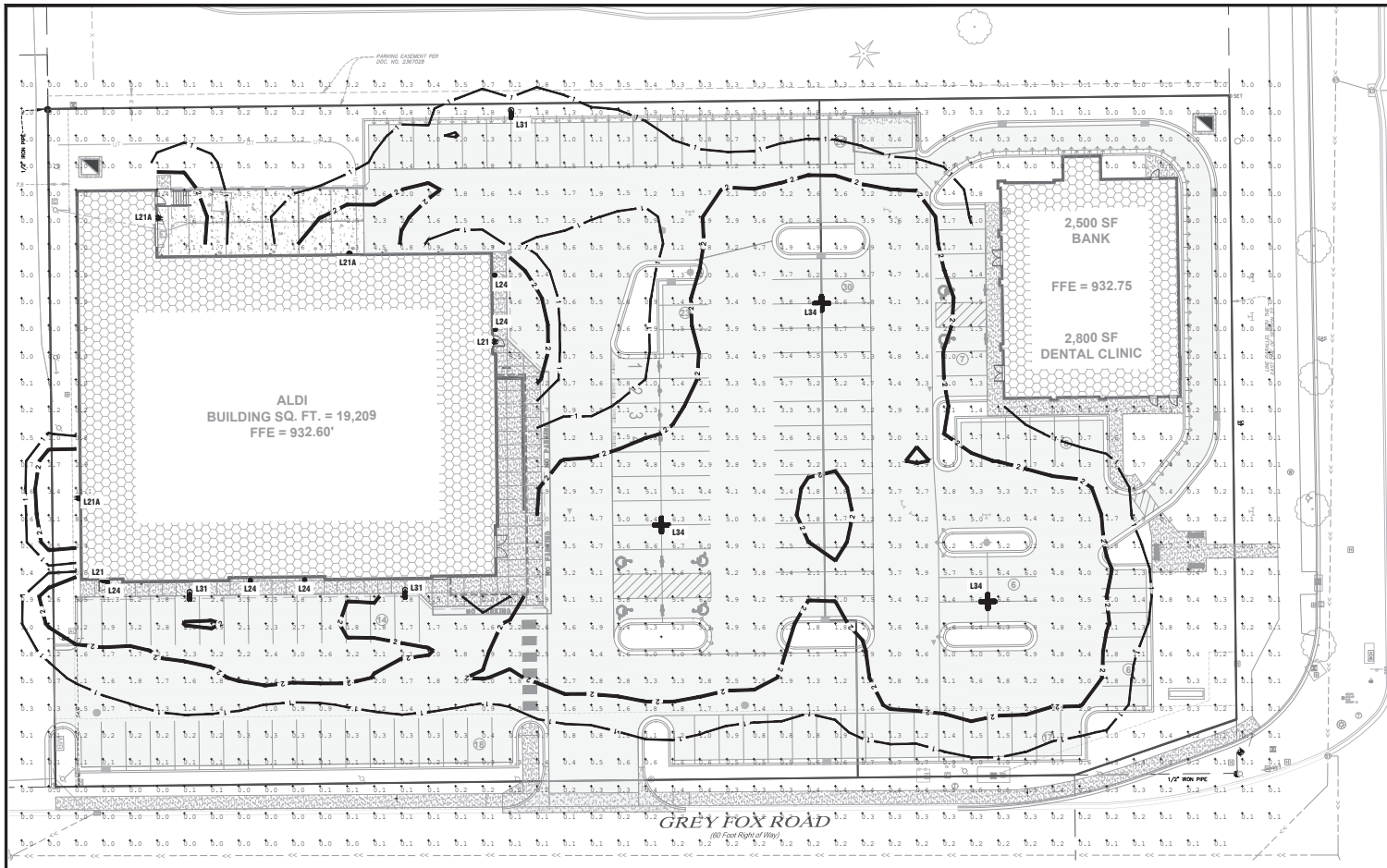
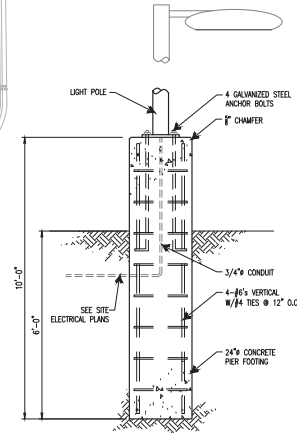


Attachment H

NOTE: SEE ELECTRICAL PLAN FOR SITE ELECTRICAL LAYOUT



LEXINGTON AVE NORTH
(Previous Name: Grey Fox Hwy)
 RAMSEY COUNTY HIGHWAY RIGHT OF WAY
 PLAT NO. 16-C.S.A. # FLEWINGTON AVE



1 LIGHT POLE DETAIL
 N.T.S.



"L21" & "L21A" LIGHT STYLE



"L24" LIGHT STYLE



"L31" & "L34" LIGHT STYLE

Provide light fixtures as shown on Fixture Schedule. Substitutions shall have prior approval by the Project Engineer before bid date. Being listed as an acceptable Manufacturer in no way relieves the Contractors obligation to provide all equipment and features in accordance with these specifications.

LIGHT FIXTURE SCHEDULE

TYPE	STYLE	MANUFACTURER/MODEL NUMBER	LAMPS	REMARKS
L21	BUILDING MOUNTED WALL PACK	CREE LIGHTING W8P1A8-8W-3MS-IL-20KAL-SV4P	LED	MOUNT FIXTURE AT 14'-0" ABOVE FINISHED FLOOR
L21A	BUILDING MOUNTED WALL PACK	CREE LIGHTING W8P1A8-8W-3MS-IL-20KAL-SV4P	LED	MOUNT FIXTURE AT 12'-0" ABOVE FINISHED FLOOR
L24	ACCENT CYLINDER	CREE LIGHTING KC-2036LED3-SAT-CLR-88	LED	MOUNT FIXTURE AT 16'-0" ABOVE FINISHED FLOOR
L31	SITE POLE SINGLE HEAD @ 90 POLE	CREE LIGHTING R03GA-AM2-8K76G3-SV; W03Q2A-SV; W03Q4B-SV CREE LIGHTING H53S-4112S-2VMS-10-C68	LED	18W/ FINED ARM MOUNT 20'-0" POLE
L34	SITE POLE QUAD HEAD @ 90 POLE	CREE LIGHTING H03GA-AM2-8K76G3-SV; W03Q2A-SV; W03Q4B-SV CREE LIGHTING H53S-4112S-2VMS-10-C68	LED	48W/ FINED ARM MOUNT 20'-0" POLE

FOOTCANDLE LEGEND



Issued:	Date:
A SITE PLAN REVIEW	08/09/21
B	
C	
D	
E	
Revisions:	Date:
1	
2	
3	
4	
5	
6	
7	
8	
9	



NOTE: THE CLARITY OF THESE PLANS DEPEND UPON COLOR COPIES. IF THIS TEXT DOES NOT APPEAR IN COLOR, THIS IS NOT AN ORIGINAL PLAN SET AND MAY RESULT IN MISINTERPRETATION.

B.M. ELEVATION = 934.99

T.A.F.H. LOCATED APPROXIMATELY 10' BACK OF CURB OF THE NORTHWEST INTERSECTION OF LEXINGTON AVENUE NORTH AND GREY FOX ROAD

I HEREBY CERTIFY THAT THIS PLAN, SPECIFICATION OR REPORT WAS PREPARED BY ME OR UNDER MY DIRECT SUPERVISION AND THAT I AM A DULY LICENSED PROFESSIONAL ENGINEER UNDER THE LAWS OF THE STATE OF MINNESOTA.
 RYAN J. ANDERSON

DATE: MM/DD/YYYY LIC. NO. 55938



MANAGING LOCATION:
 MINNEAPOLIS / ST. PAUL OFFICE
 7900 INTERNATIONAL DRIVE
 INTERNATIONAL PLAZA, SUITE 550
 MINNEAPOLIS, MN 55425
 PHONE: 952.426.0699



ALDI Inc. Store #: 30
 ARDEN HILLS, MN
 1133 GREY FOX RD
 ARDEN HILLS, MN 55112
 RAMSEY COUNTY
 Project Name & Location:

SITE LIGHT
 PHOTOMETRICS PLAN

Drawing Name: ISG Project No.

Type: V7.0 ER 20-23946

Drawn By: JMF/LFO

Designed By: JMF C-610

Reviewed By: RJA Drawing No.



PRELIMINARY NOT FOR CONSTRUCTION