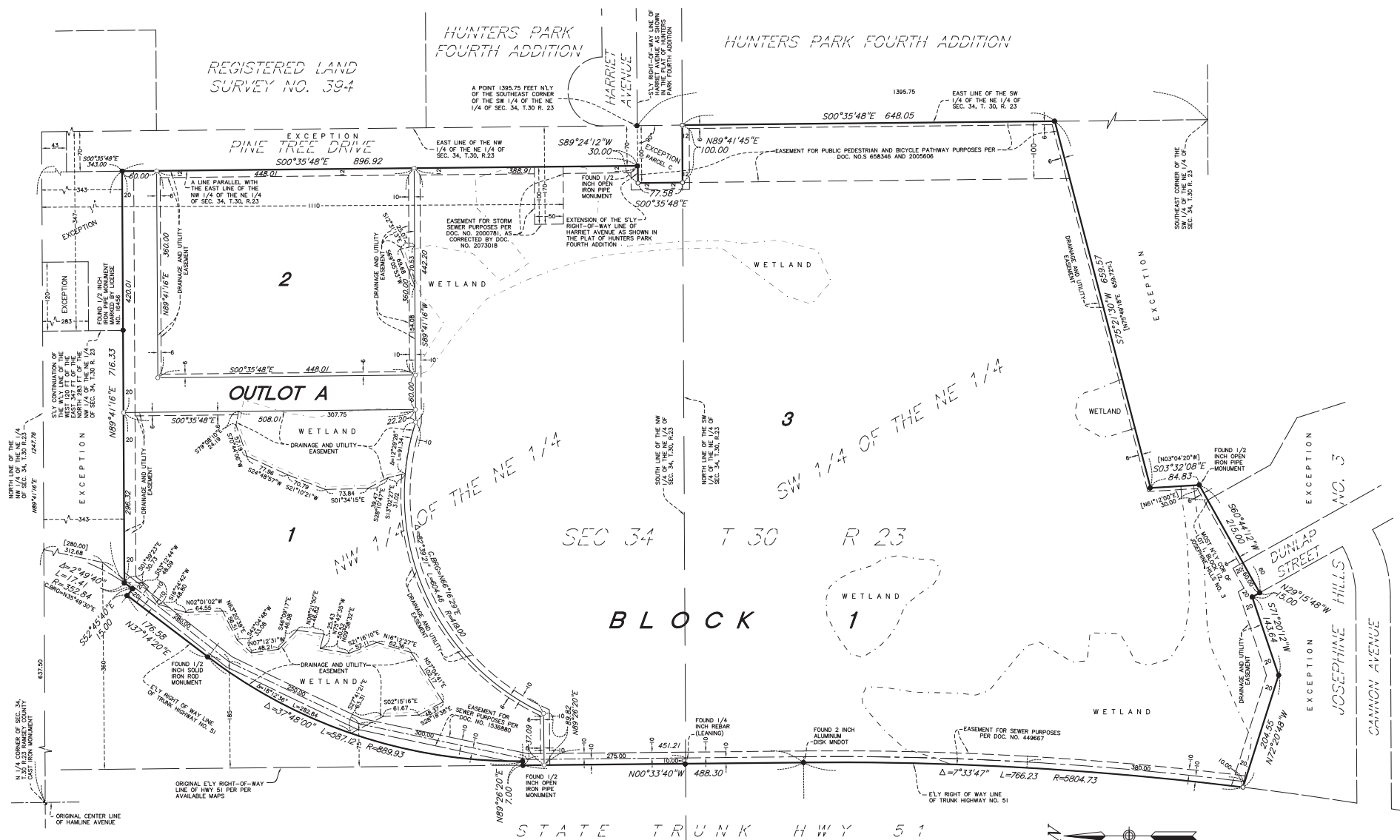


2 PINE TREE NORTH

REGISTERED LAND
SURVEY NO. 394

HUNTERS PARK
FOURTH ADDITION

HUNTERS PARK FOURTH ADDITION



A POINT 1386.75 FEET NLY OF THE SOUTHEAST CORNER OF THE SW 1/4 OF THE NE 1/4 OF SEC. 34, T.30, R.23

EAST LINE OF THE SW 1/4 OF THE NE 1/4 OF SEC. 34, T. 30, R. 23

1/2 INCH RIGHT-OF-WAY LINE OF STATE TRUNK HWY 51 IN THE PLACE OF HUNTERS PARK FOURTH ADDITION

EXCEPTION

EXCEPTION

EXCEPTION

EXCEPTION

EXCEPTION

EXCEPTION

EXCEPTION

EXCEPTION

EXCEPTION

EXCEPTION

EXCEPTION

EXCEPTION

EXCEPTION

EXCEPTION

EXCEPTION

EXCEPTION

EXCEPTION

EXCEPTION

EXCEPTION

EXCEPTION

EXCEPTION

EXCEPTION

EXCEPTION

EXCEPTION

EXCEPTION

EXCEPTION

EXCEPTION

N 1/4 CORNER OF SEC. 34, T.30, R.23 RAMSEY COUNTY, MINN. LAST IRON MONUMENT

N 1/4 CORNER OF SEC. 34, T.30, R.23

N 1/4 CORNER OF SEC. 34, T.30, R.23 RAMSEY COUNTY, MINN. LAST IRON MONUMENT

N 1/4 CORNER OF SEC. 34, T.30, R.23

ORIGINAL ELY RIGHT-OF-WAY LINE OF HWY 51 PER PER AVAILABLE MAPS

STATE TRUNK HWY 51



SCALE
IN FEET
1 INCH = 80 FEET

- DENOTES 1/2 INCH BY 14 INCH IRON PIPE MONUMENT SET AND MARKED BY LICENSE NO. 44900
- DENOTES FOUND 1/2 INCH IRON PIPE MONUMENT MARKED BY LICENSE NO. 23677, UNLESS OTHERWISE NOTED.

FOR THE PURPOSES OF THIS PLAT THE EAST LINE OF THE SOUTHWEST QUARTER OF THE NORTHEAST QUARTER OF SECTION 34, T. 30, R. 23, RAMSEY COUNTY, MINNESOTA IS ASSUMED TO HAVE A BEARING OF S00°35'48\"/>

