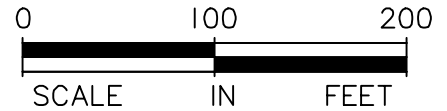
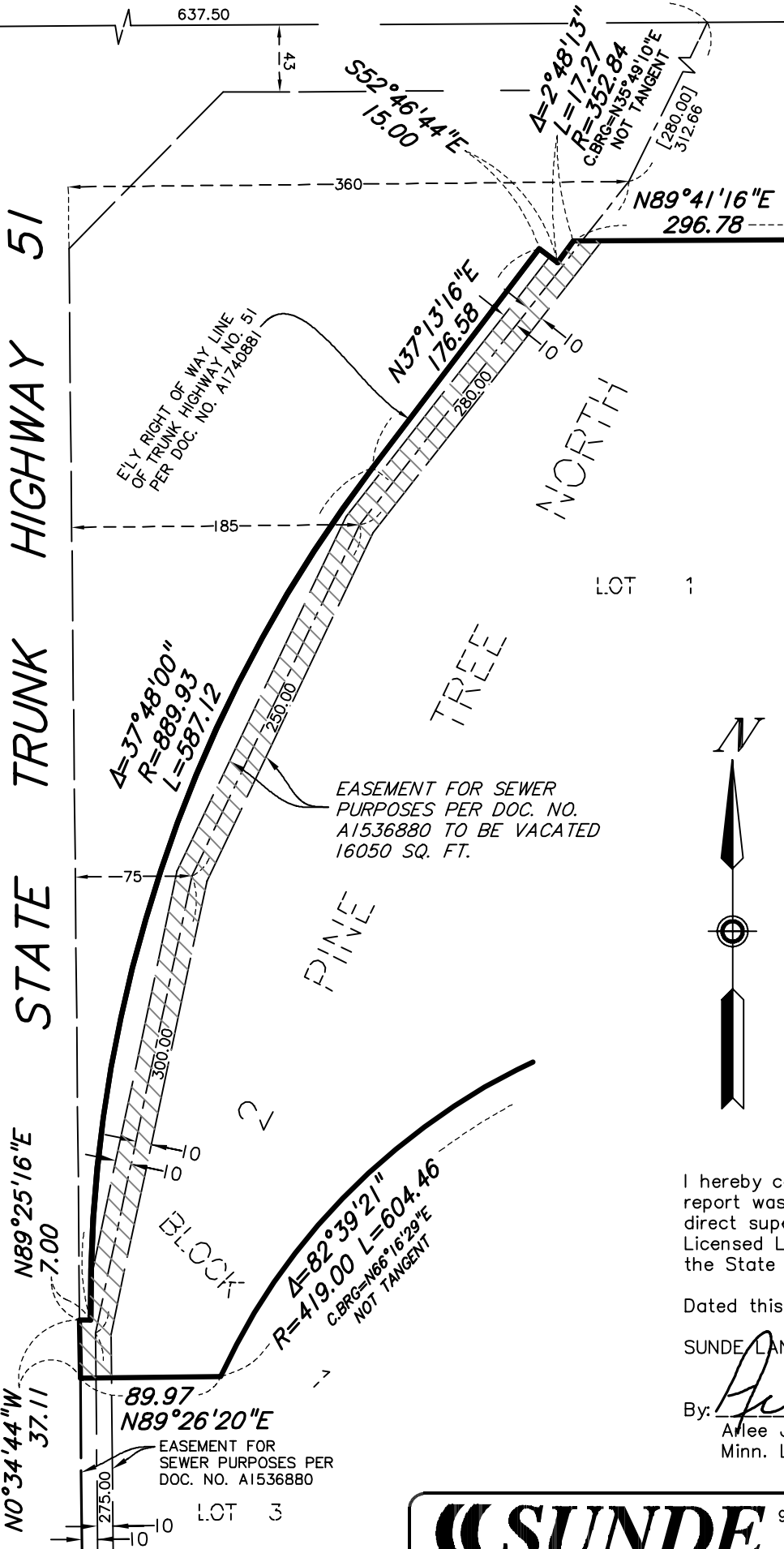


Vacation
Description
Sketch For:
**BOLDT
CAPITAL LLC**

PROPOSED VACATION
DESCRIPTION

That part of the Easement for Sewer Purposes per Document No. A1536880 lying within Lot 1, Block 1, 2 PINE TREE NORTH, according to the recorded plat thereof, Ramsey County, Minnesota.



I hereby certify that this sketch, plan, or report was prepared by me or under my direct supervision and that I am a duly Licensed Land Surveyor under the laws of the State of Minnesota.

Dated this 13th day of May, 2021

SUNDE LAND SURVEYING, LLC.

By: *Ailee J. Carlson*
Ailee J. Carlson, P.L.S.
Minn. Lic. No. 44900



9001 East Bloomington Freeway (35W) • Suite 118
Bloomington, Minnesota 55420-3435
952-881-2455 (Fax: 952-888-9526)
www.sunde.com