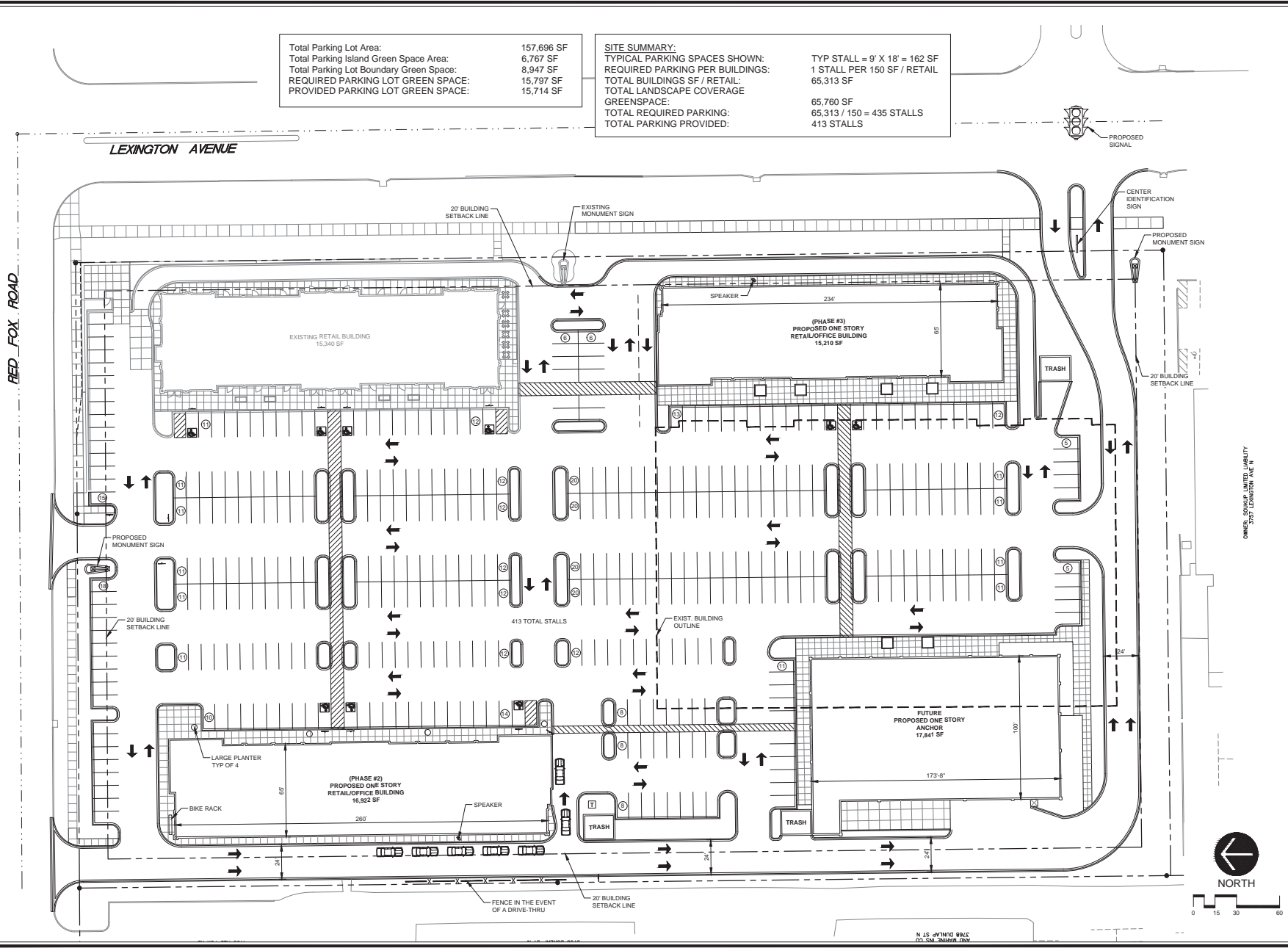


ARCHITECTURAL CONSORTIUM L.L.C.

901 North Third Street, Suite 220 612-436-4030
 Minneapolis, MN 55401 Fax 612-692-9960

| | |
|---|------------|
| Total Parking Lot Area: | 157,696 SF |
| Total Parking Island Green Space Area: | 6,767 SF |
| Total Parking Lot Boundary Green Space: | 8,947 SF |
| REQUIRED PARKING LOT GREEN SPACE: | 15,797 SF |
| PROVIDED PARKING LOT GREEN SPACE: | 15,714 SF |

| | |
|--------------------------------------|-------------------------------|
| SITE SUMMARY: | TYP STALL = 9' X 18' = 162 SF |
| TYPICAL PARKING SPACES SHOWN: | 1 STALL PER 150 SF / RETAIL |
| REQUIRED PARKING PER BUILDINGS: | 65,313 SF |
| TOTAL BUILDINGS SF / RETAIL: | 65,760 SF |
| TOTAL LANDSCAPE COVERAGE GREENSPACE: | 65,313 / 150 = 435 STALLS |
| TOTAL REQUIRED PARKING: | 413 STALLS |
| TOTAL PARKING PROVIDED: | |



Mark Revision / Issue Date

PRELIMINARY
 NOT FOR CONSTRUCTION

I hereby certify that this plan, specification, or report was prepared by me or under my direct supervision, and that I am a duly Licensed Architect under the laws of the State of Minnesota.

Printed Name: Kathy L. Anderson
 Signature: _____
 Date: _____ License #: _____

LEXINGTON STATION
 ARDEN HILLS, MN

MASTER PUD SITE PLAN
 SCALE: AS NOTED

PROJECT NUMBER: 16-1043-01
 ISSUED DATE:
 DRAWN BY:
 CHECKED BY:

A1.1
 Architectural Consortium, L.L.C. 2016

Total Parking Lot Area: 157,696 SF
 Total Parking Island Green Space Area: 6,767 SF
 Total Parking Lot Boundary Green Space: 9,947 SF
 REQUIRED PARKING LOT GREEN SPACE: 15,797 SF
 PROVIDED PARKING LOT GREEN SPACE: 15,714 SF

SITE SUMMARY:
 TYPICAL PARKING SPACES SHOWN: TYP STALL = 9' X 18' = 162 SF
 REQUIRED PARKING PER BUILDINGS: 1 STALL PER 150 SF / RETAIL
 TOTAL BUILDINGS SF / RETAIL: 66,313 SF
 TOTAL LANDSCAPE COVERAGE: 66,760 SF
 GREENSPACE: 66,313 / 150 = 438 STALLS
 TOTAL REQUIRED PARKING: 413 STALLS
 TOTAL PARKING PROVIDED: 413 STALLS

