

Mark Revision / Issue Date

**PRELIMINARY**  
 NOT FOR CONSTRUCTION

I hereby certify that this plan, specification, or report was prepared by me or under my direct supervision and that I am a duly Licensed Architect under the laws of the State of Minnesota.

Printed Name: Kathy L. Anderson

Signature: \_\_\_\_\_

Date: \_\_\_\_\_ License #: \_\_\_\_\_

**LEXINGTON STATION**

**ARDEN HILLS, MN**

**MASTER PUD SITE PLAN**

**SCALE: AS NOTED**

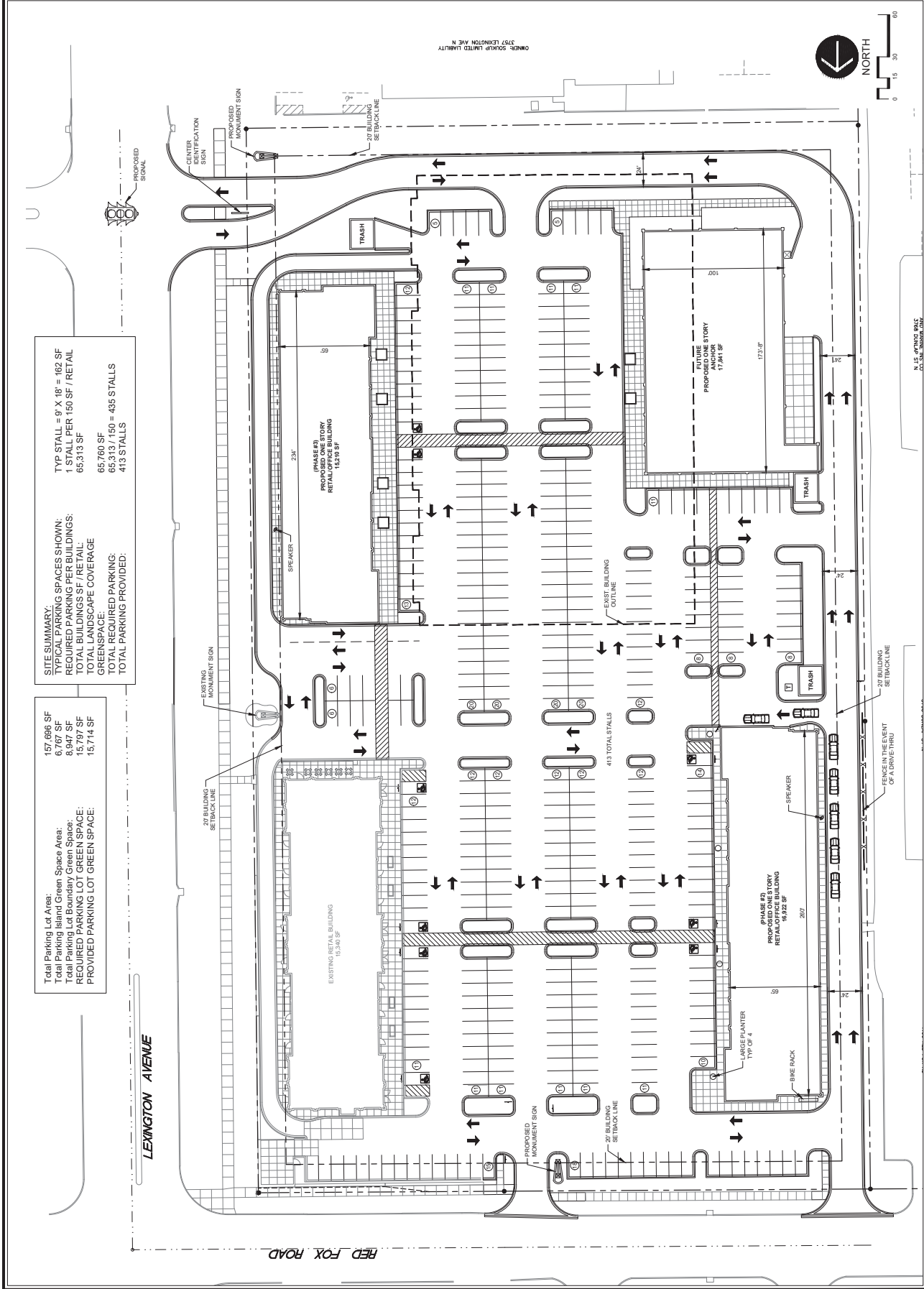
PROJECT NUMBER: 16-1043-01

DATE: \_\_\_\_\_

DRAWN BY: \_\_\_\_\_

CHECKED BY: \_\_\_\_\_

**A1.1**



**SITE SUMMARY:**  
 TYPICAL PARKING SPACES SHOWN: 1 STALL PER 150 SF / RETAIL  
 REQUIRED PARKING PER BUILDINGS: 65,313 SF  
 TOTAL BUILDINGS SF / RETAIL: 65,760 SF  
 TOTAL LANDSCAPE COVERAGE GREENSPACE: 65,313 / 150 = 435 STALLS  
 TOTAL REQUIRED PARKING: 413 STALLS  
 TOTAL PARKING PROVIDED:

Total Parking Lot Area: 157,696 SF  
 Total Parking Island Green Space Area: 6,767 SF  
 Total Parking Lot Boundary Green Space: 8,947 SF  
 REQUIRED PARKING LOT GREEN SPACE: 15,797 SF  
 PROVIDED PARKING LOT GREEN SPACE: 15,714 SF

LEXINGTON AVENUE

RED FOX ROAD

N. S. NORTH DR.  
 N. S. S. NORTH DR.

OWNERS: SOKRUP LIMITED LIABILITY  
 3757 LEXINGTON AVE N

**Total Parking Lot Area:**  
 157,696 SF  
**Total Parking Island Green Space Area:**  
 6,742 SF  
**Total Green Space Area:**  
 164,438 SF  
**REQUIRED PARKING LOT GREEN SPACE:**  
 15,714 SF  
**PROVIDED PARKING LOT GREEN SPACE:**  
 15,714 SF

**SITE SUMMARY:**  
 TYPICAL PARKING SPACES SHOWN:  
 7' X 21' PER 150 SF / RETAIL  
 7' X 21' PER 150 SF / RETAIL  
**TOTAL BUILDINGS SF / RETAIL:**  
 65,313 SF  
**TOTAL LANDSCAPE COVERAGE:**  
 65,313 SF  
**TOTAL REQUIRED PARKING:**  
 438 STALLS  
**TOTAL PARKING PROVIDED:**  
 413 STALLS

