



**Chick-fil-A**  
 5200 Buffington Road  
 Atlanta, Georgia  
 30349-2998

**HRGreen**  
 ILLINOIS DESIGN FIRM  
 # 184.001322  
 420 N. FRONT STREET, SUITE 100  
 McHENRY, IL 60050  
 PHONE: 815.385.1778  
 FAX: 815.385.1781

**CHICK-FIL-A**  
**ARDEN HILLS (MN) FSU**  
 3855 LEXINGTON AVENUE  
 ARDEN HILLS, MN 55126

**FSR# 04807**

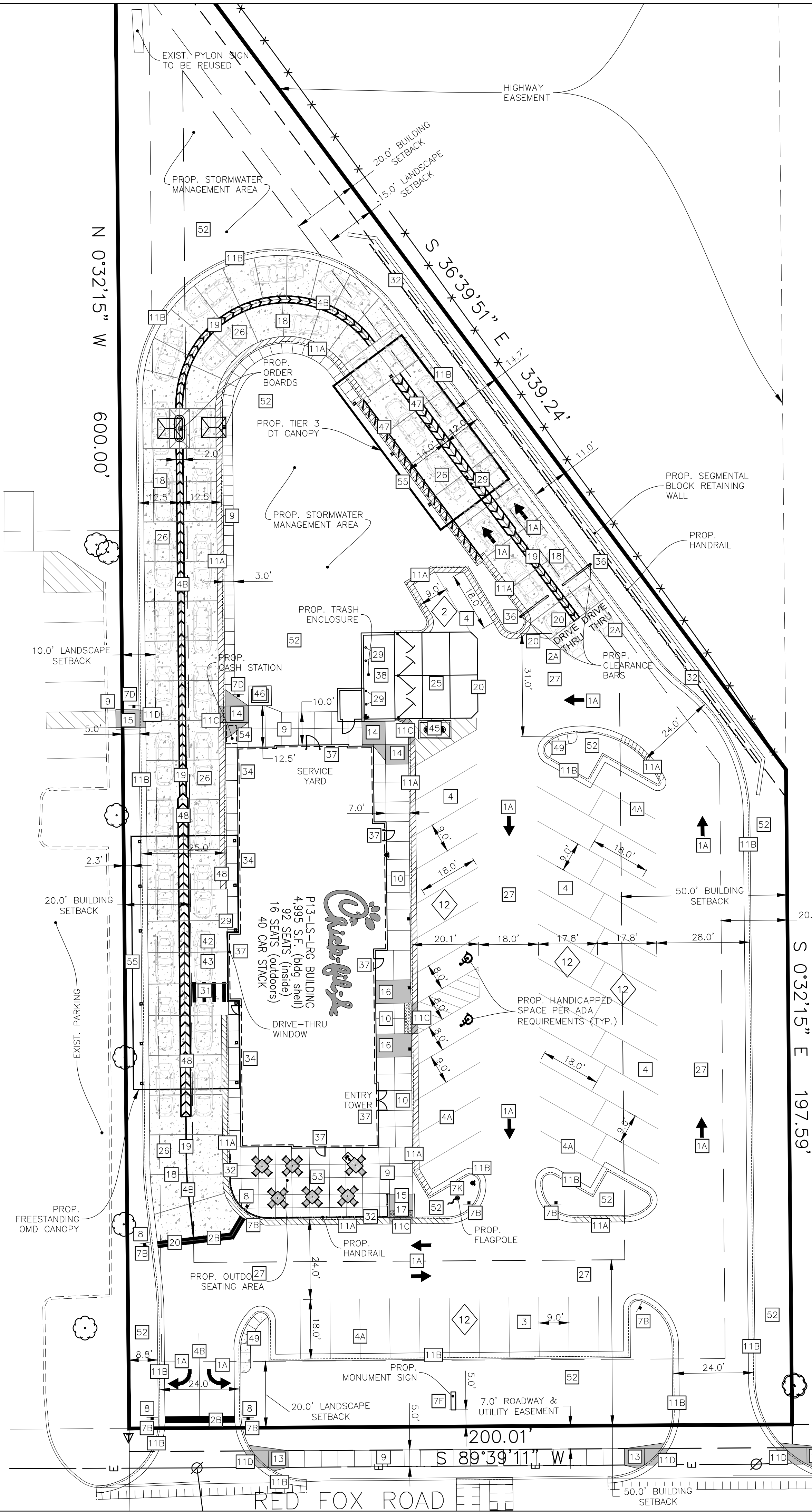
REVISION SCHEDULE	NO.	DATE	DESCRIPTION

**PRELIMINARY**

ENGINEER'S PROJECT #	200930
PRINTED FOR	PRELIMINARY
DATE	12/02/2020
DRAWN BY:	ECH
CHECKED BY:	JFV
Information contained on this drawing and in all digital files produced for above named project may not be reproduced in any manner without express written or verbal consent from authorized project representatives.	
SHEET	
<b>SITE PLAN</b>	
SHEET NUMBER	
<b>C-200</b>	

**SITE PLAN DESIGN NOTES & KEY PLAN**

- 1A DIRECTIONAL ARROW (C-400)
  - 1B PAINTED HANDICAP PARKING SYMBOL (C-400)
  - 2A DRIVE-THRU GRAPHICS (C-400)
  - 2B STOP LINE GRAPHIC (C-400)
  - 3 STANDARD PARKING STALL (9.0'x18.0') PER CODE (C-400)
  - 4 STANDARD 60 DEGREE PARKING STALL (C-400)
  - 4A 4" SOLID WHITE STRIPING
  - 4B 4" SOLID YELLOW STRIPING
  - 4C 4" SKIP-DASH-YELLOW STRIPING
  - 5 BOLLARD MOUNTED SIGN (C-400)
  - 6 ADA ACCESSIBLE PARKING SIGN (C-400)
  - 7 DIRECTIONAL SIGNAGE
- ALL SIGNS SHALL CONFORM TO THE "MANUAL ON UNIFORM TRAFFIC CONTROL DEVICES" BY THE U.S. DEPARTMENT OF TRANSPORTATION. (SEE SIGN LEGEND)
- 7A THRU 7E (SEE SIGNAGE LEGEND, THIS SHEET)
- 7F CHICK-FIL-A MONUMENT, SEE SIGNAGE PACKAGE
  - 7G CHICK-FIL-A "ENTER" SIGN, SEE SIGNAGE PACKAGE
  - 7H CHICK-FIL-A "EXIT" SIGN, SEE SIGNAGE PACKAGE
  - 7I CHICK-FIL-A "DRIVE THRU" SIGN, SEE SIGNAGE PACKAGE
  - 7J DRIVE THRU ORDERING STATION, SEE SIGNAGE PACKAGE
  - 7K FLAGPOLE, 50', SEE SIGNAGE PACKAGE
- 8 STOP SIGN, 40', SEE SIGNAGE PACKAGE
  - 9 TYPICAL CONCRETE SIDEWALK, 5' MIN. (C-400)
  - 10 7' WIDE SIDEWALK w/ CURB & GUTTER (C-400)
  - 11 24" CONCRETE CURB & GUTTER (C-400)
  - 11A SPILLING CURB SECTION
  - 11B CATCHING CURB SECTION
  - 11C DEPRESSED SPILLING CURB
  - 11D DEPRESSED CATCHING CURB
  - 12 CONCRETE PAVEMENT SECTIONS (C-400)
  - 13 HANDICAP RAMP w/ SHORT FLARED SIDES (GRASSED AREAS) (C-400)
  - 14 HANDICAP RAMP w/ FLARED SIDES (IN SIDEWALK) (C-400)
  - 15 RETURNED CURB HANDICAP RAMP (C-400)
  - 16 SIDEWALK (ADA COMPLIANT) RAMP (C-400)
  - 17 DETECTABLE WARNING DEVICE (C-400)
  - 18 TRANSVERSE & LONGITUDINAL CONTRACTION JOINT (C-400)
  - 19 TRANSVERSE & LONGITUDINAL DOWELED CONSTRUCTION JOINT (C-400)
  - 20 PAVEMENT EDGE DETAIL (C-400)
  - 21 CONTRACTION JOINT
  - 22 KEYED CONSTRUCTION JOINT
  - 23 LONGITUDINAL BUTT JOINT
  - 24 EXPANSION JOINT
  - 25 CONCRETE APRON @ TRASH ENCLOSURE (C-402)
  - 26 CONCRETE PAVEMENT DRIVE-THRU LANE (C-402)
  - 27 TYPICAL HMA PAVEMENT SECTION (C-402)
  - 28 BUTT JOINT (C-402)
  - 29 CONCRETE BOLLARD (C-402)
  - 30 MULTI-LANE DIRECTIONAL GRAPHICS (C-402)
  - 31 CROSSWALK MARKINGS (C-402)
  - 32 ALUMINUM HANDRAIL (C-402)
  - 33 TYPICAL ADA RAMP & HANDRAIL (C-402)
  - 34 BUILDING DOWNSPOUT CONNECTION (TO SITE DRAINAGE SYSTEM) (C-402)
  - 35 ROLLOVER/MOUNTABLE CURB (C-402)
  - 36 DRIVE-THRU CLEARANCE BAR (C-402)
  - 37 ENTRY DOOR FROST SLAB DETAIL (C-403)
  - 38 SCREENED REFUSE ENCLOSURE FOUNDATION (C-403)
  - 39 MENU BOARD LOOP DETECTION SYSTEM (C-403)
  - 40 MENU BOARD LOOP DETECTION SYSTEM (ISO VIEW) (C-403)
  - 41 DRIVE-THRU ORDER POINT ISLAND (C-403)
  - 42 DRIVE-THRU PLAN FLUSH WITH FFE (C-403)
  - 43 DRIVE-THRU ISOMETRIC PLAN (C-403)
  - 44 DRIVE-THRU PLAN 2" BELOW FFE (C-403)
  - 45 GREASE TRAP
  - 46 PROPOSED TRANSFORMER
  - 47 DRIVE-THRU STRIPING (C-404)
  - 48 MEAL DELIVERY AREA STRIPING (C-404)
  - 49 LANDSCAPE & IRRIGATION PROTECTOR (C-404)
  - 50 SOLID PLASTIC WHEEL STOP (C-404)
  - 51 BIKE RACK
  - 52 LANDSCAPED AREA
  - 53 TYPICAL LOCATION FOR OUTDOOR TABLES (SEE EQUIPMENT SCHEDULE)
  - 54 CONCRETE PAD FOR OPTIONAL CASH STATION
  - 55 FACE-TO-FACE DRIVE-THRU CANOPY SYSTEMS



**PROJECT NOTES:**

- ALL CONSTRUCTION WITHIN PUBLIC R.O.W./ EASEMENTS AND OR CONNECTION TO PUBLIC SEWERS AND STREETS SHALL COMPLY WITH THE CITY OF ARDEN HILLS STANDARD CONSTRUCTION SPECIFICATIONS.
- AT LEAST ONE WEEK PRIOR TO ANY CONSTRUCTION WITHIN PUBLIC R.O.W./ EASEMENTS AND/OR ANY CONNECTION TO PUBLIC SEWERS AND STREETS, THE CONTRACTOR SHALL CONTACT THE CITY TO OBTAIN APPLICABLE CITY PERMITS.
- INGRESS/EGRESS WILL BE PROVIDED INTERNAL AND EXTERNAL TO THIS SITE.
- ALL CONCRETE CURB & GUTTER SHALL BE 24" (B6.18) UNLESS OTHERWISE NOTED ON THE PLANS.
- ALL PAVEMENT DIMENSIONS ARE MEASURED TO THE FACE OF CURB UNLESS OTHERWISE NOTED.
- ALL CURB ADJOINING SIDEWALKS SHALL BE DOWELED INTO THE CURB. SEE DETAIL ON SHEET C-400
- ALL CONSTRUCTION MATERIALS, DUMPSTER, DETACHED TRAILERS OR SIMILAR ITEMS ARE PROHIBITED ON PUBLIC STREETS OR WITHIN THE PUBLIC RIGHT-OF-WAY

**SITE DATA:**

- PARCEL ID #: 27-30-23-14-0001
- ZONING: B-3 (SERVICE BUSINESS DISTRICT)
- LOT SIZE: 66,853± SQ. FT. (1.535 ACRES)

**BUILDING DATA:**

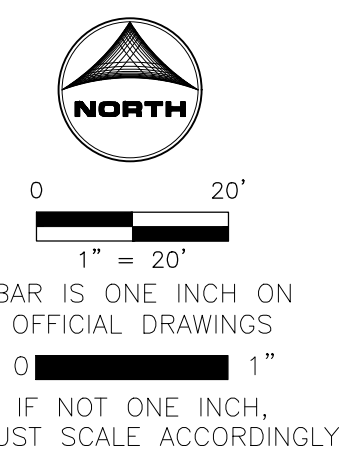
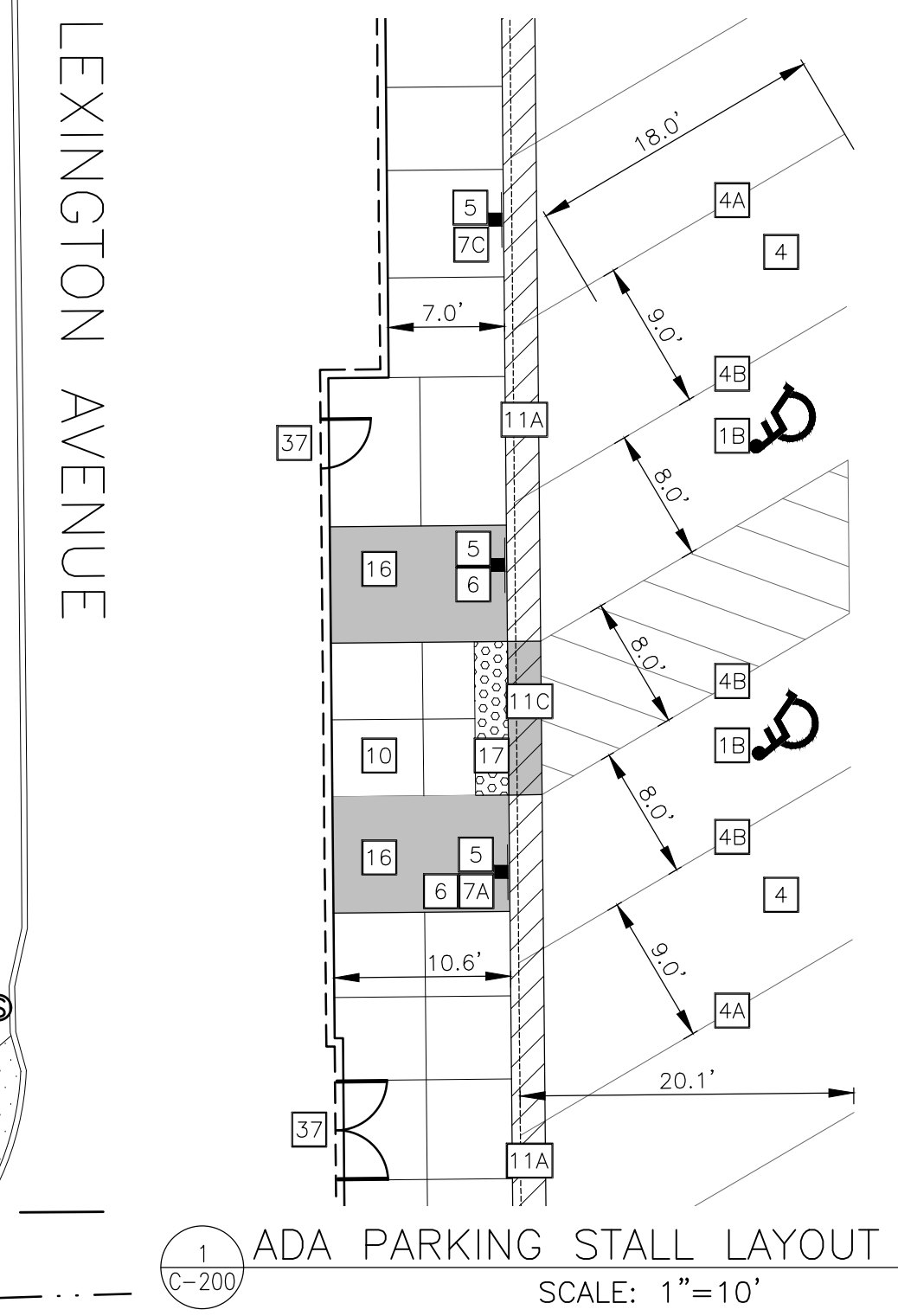
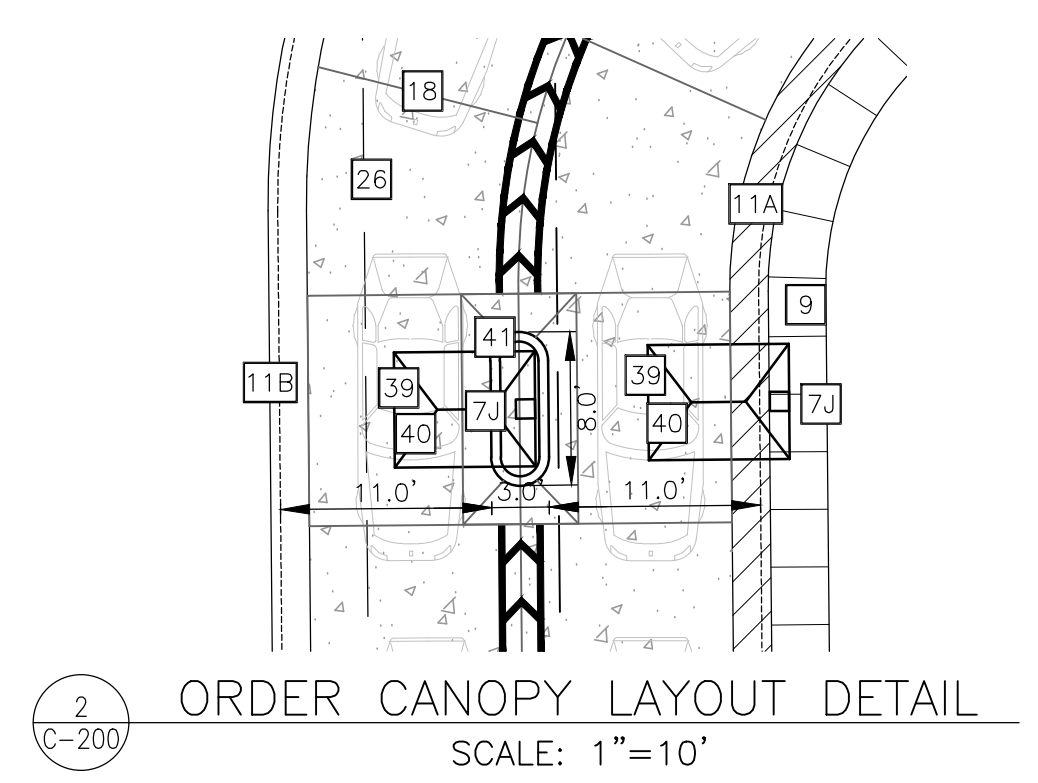
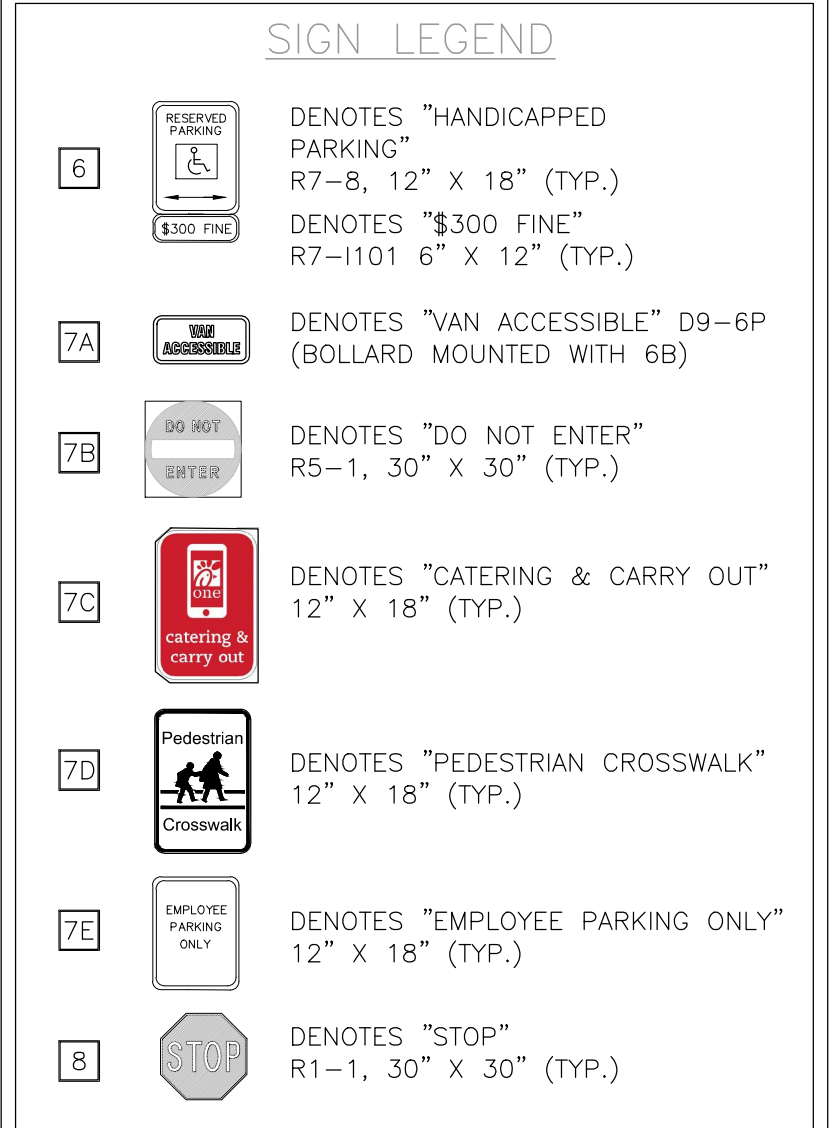
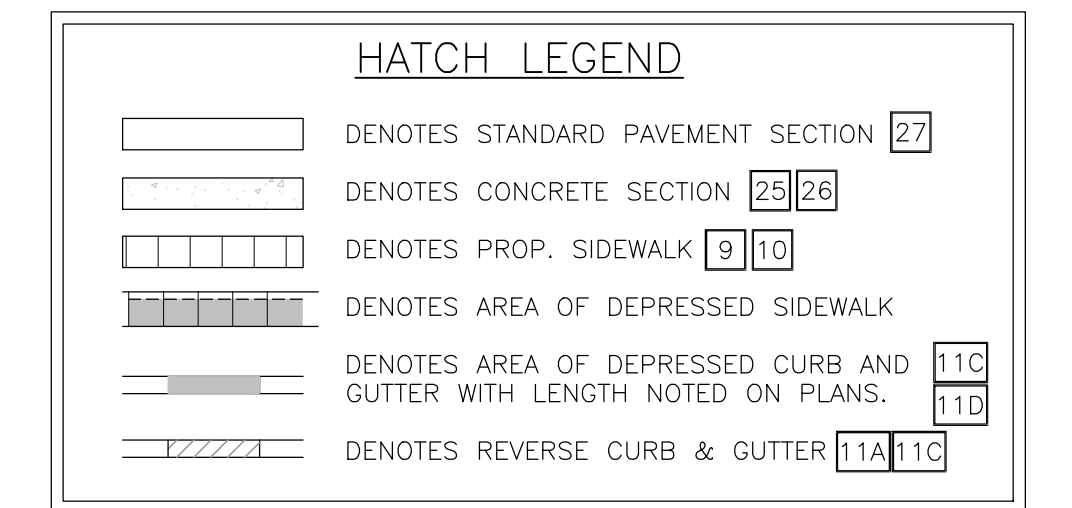
- BUILDING FLOOR AREA: 4,995± SQ. FT.
- NUMBER OF EMPLOYEES DURING LARGEST SHIFT = 15 EMPLOYEES
- TOTAL NUMBER OF SEATS = 108
- INDOOR SEATS = 92
- OUTDOOR SEATS = 24

**PARKING DATA:**

- NUMBER OF REGULAR PARKING SPACES: 48
- NUMBER OF ADA SPACES: 2
- TOTAL NUMBER OF SPACES PROVIDED: 50
- TOTAL NUMBER OF SPACES REQUIRED: 58
- TYPICAL PARKING WIDTH: 9.0'
- TYPICAL 90° PARKING LENGTH: 18.0'
- MINIMUM ISLE WIDTH: 24.0' (90°)

**PARKING FORMULA:**

- 1 PARKING SPACE FOR EVERY 2 SEATS. IF INCLUDING OUTDOOR SEATING, 58 PARKING SPACES WOULD BE REQUIRED.
- TOTAL REQUIRED PARKING (PER 116 SEATS) = 58 SPACES



**PRELIMINARY NOT FOR CONSTRUCTION**