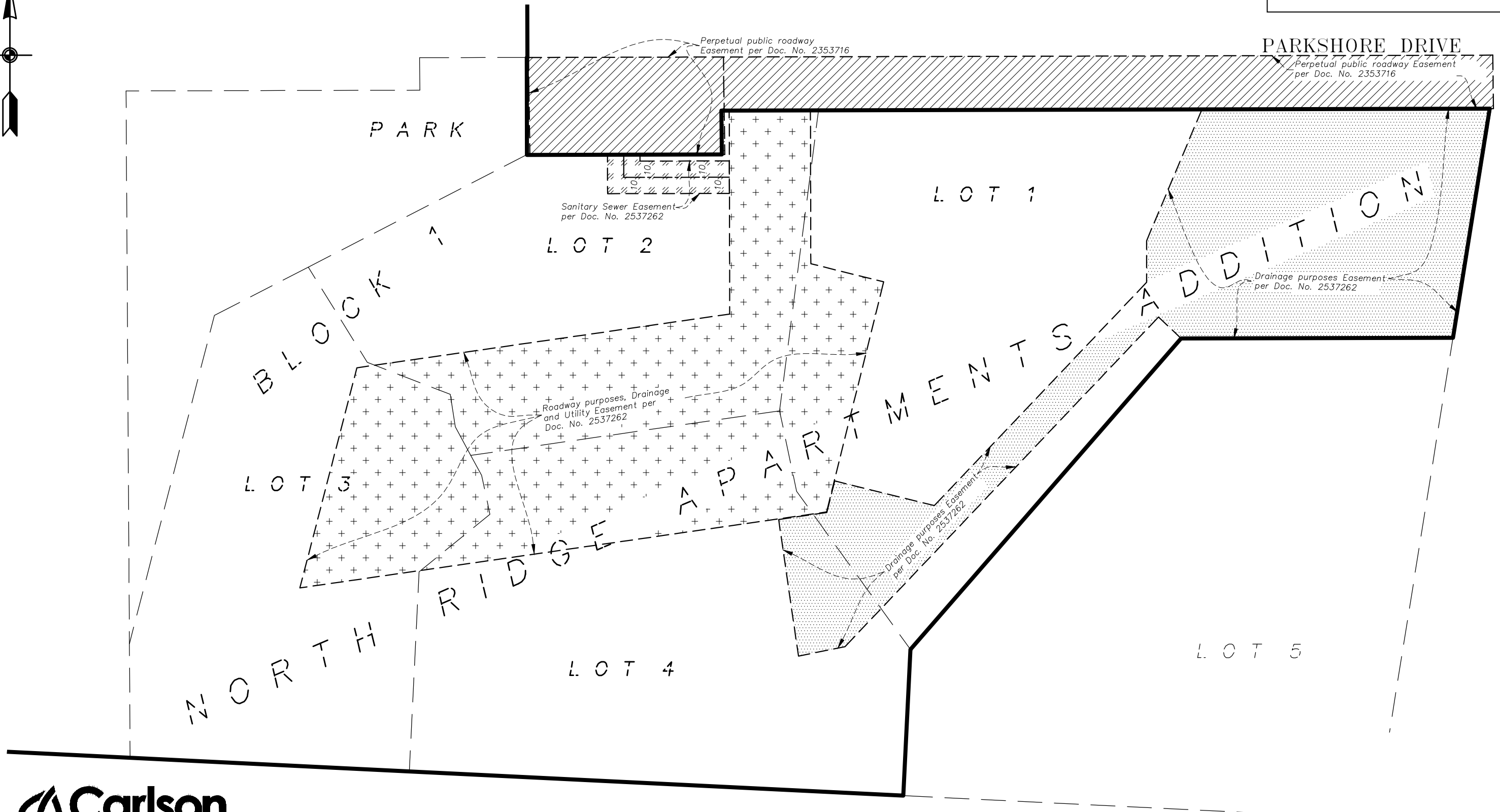


Drainage and Utility Easement Vacation Description Sketch

Attachment B

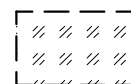


ENVIRONMENTAL • ENGINEERING • SURVEYING
3890 Pheasant Ridge Drive NE,
Suite 100, Blaine, MN 55449

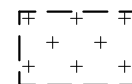
Phone: 763-489-7900 Fax: 763-489-7959



Roadway Easement
Vacation Area



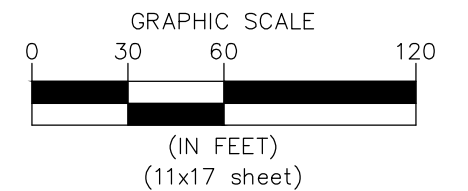
Sanitary Sewer
Easement Vacation Area



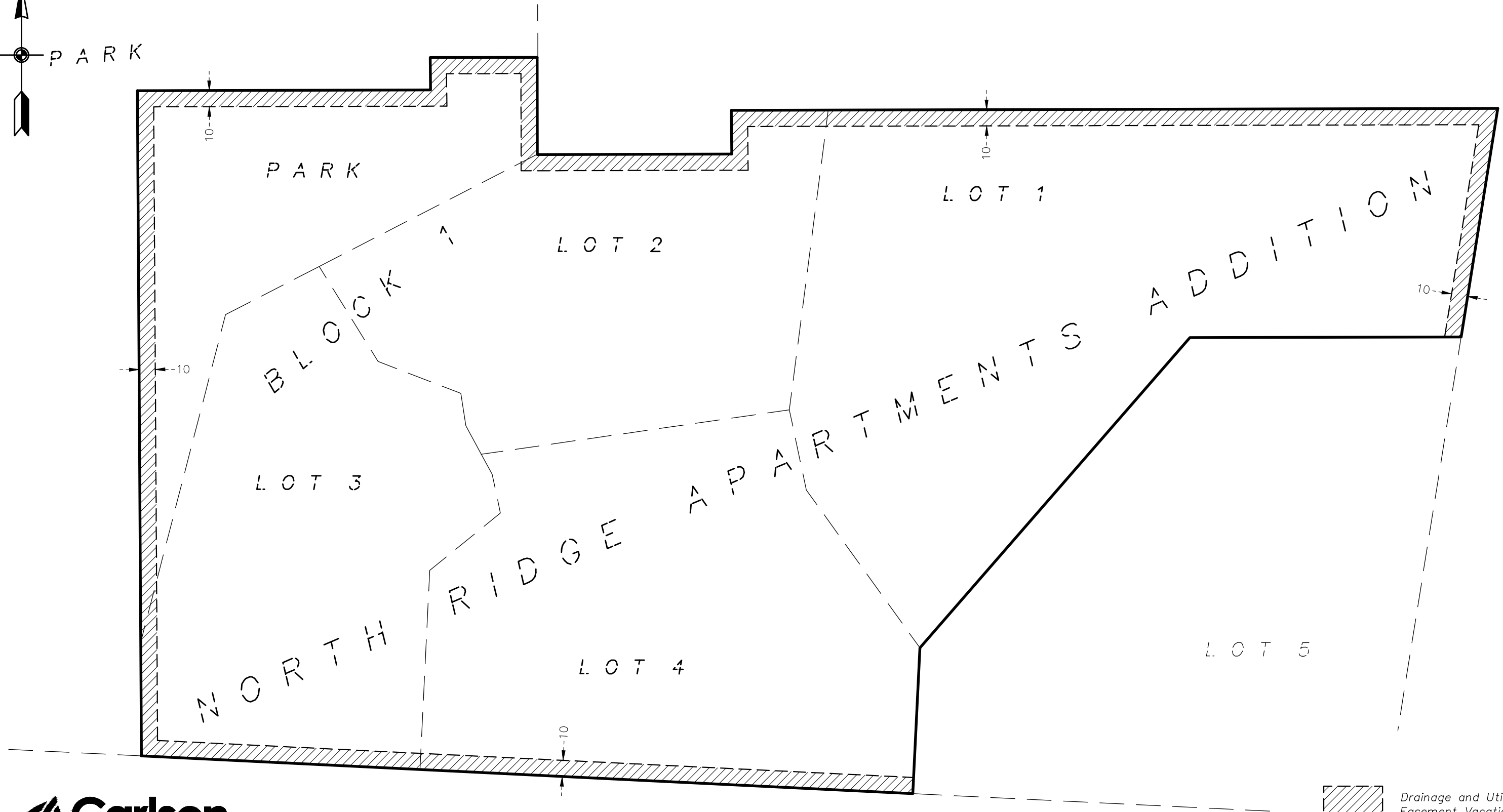
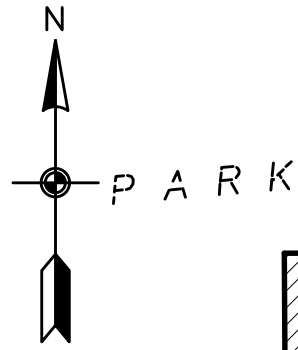
Roadway, Drainage and Utility
Easement Vacation Area




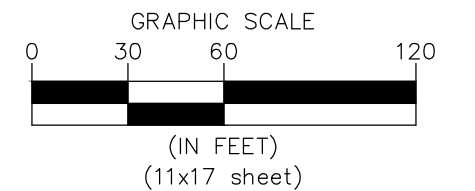
Drainage Easement
Vacation Area



Drainage and Utility Easement Vacation Description Sketch



 Drainage and Utility Easement Vacation Area



PROPOSED EASEMENT:

All of the drainage and utility easements as created and dedicated in NORTH RIDGE APARTMENTS ADDITION, according to the recorded plat thereof, Ramsey County, Minnesota, lying over, under, and across Lots 1, 2, 3, and 4, Block 1, and the Park.

Said easement contains ±19,465 sq. ft.



ENVIRONMENTAL • ENGINEERING • SURVEYING
 3890 Pheasant Ridge Drive NE,
 Suite 100, Blaine, MN 55449
 Phone: 763-489-7900 Fax: 763-489-7959

Save Date: 03/26/19 I:\jobs\7781 - 7800\7781 - submit - arden hills\cad\survey\7781_vac-sketch 1.dwg