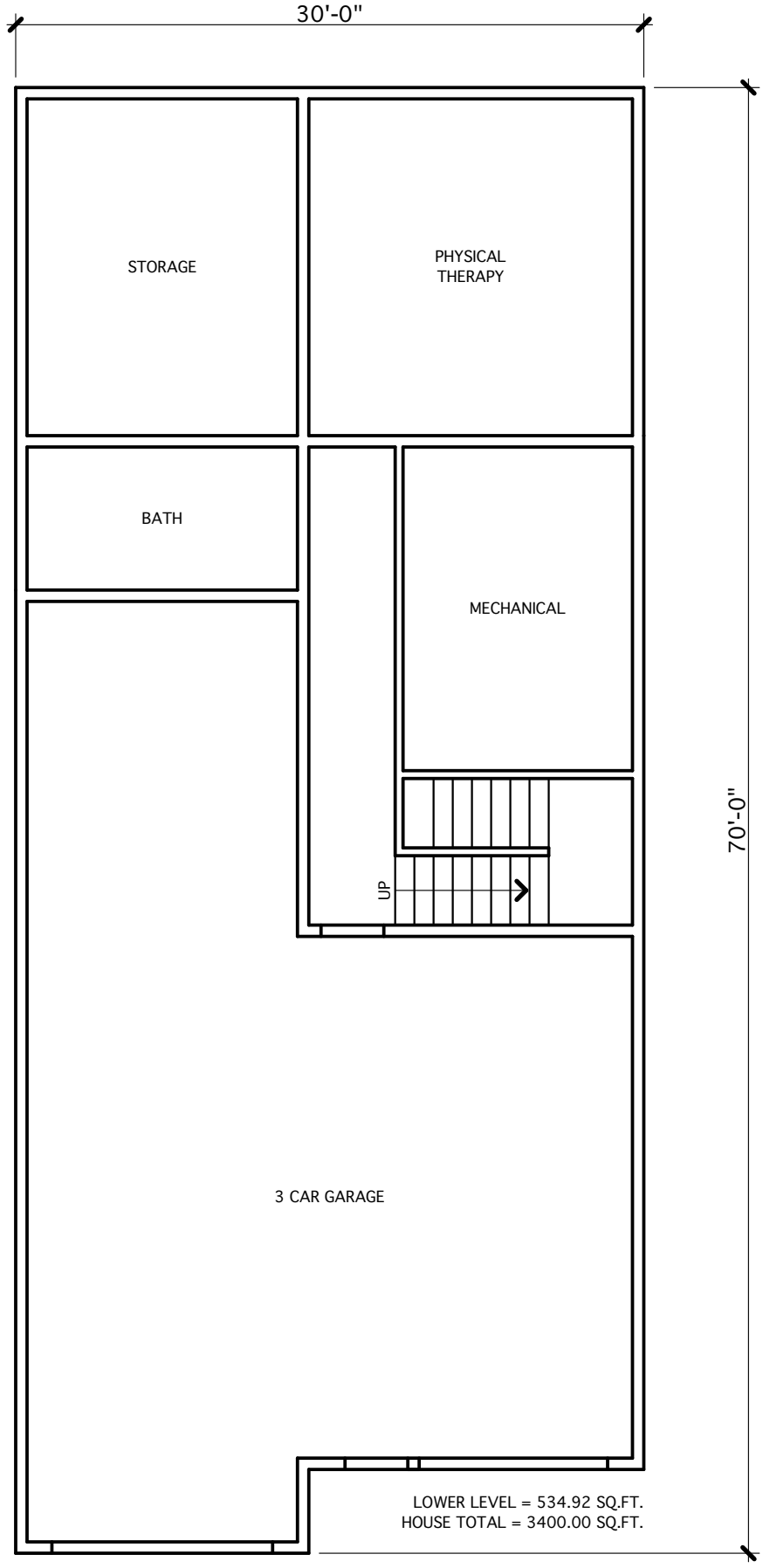




821 Raymond Ave., Ste. 400  
St. Paul, Minnesota 55114  
612-812-5687

www.kellarchitects.com

3244 SANDEEN ROAD



1  
01

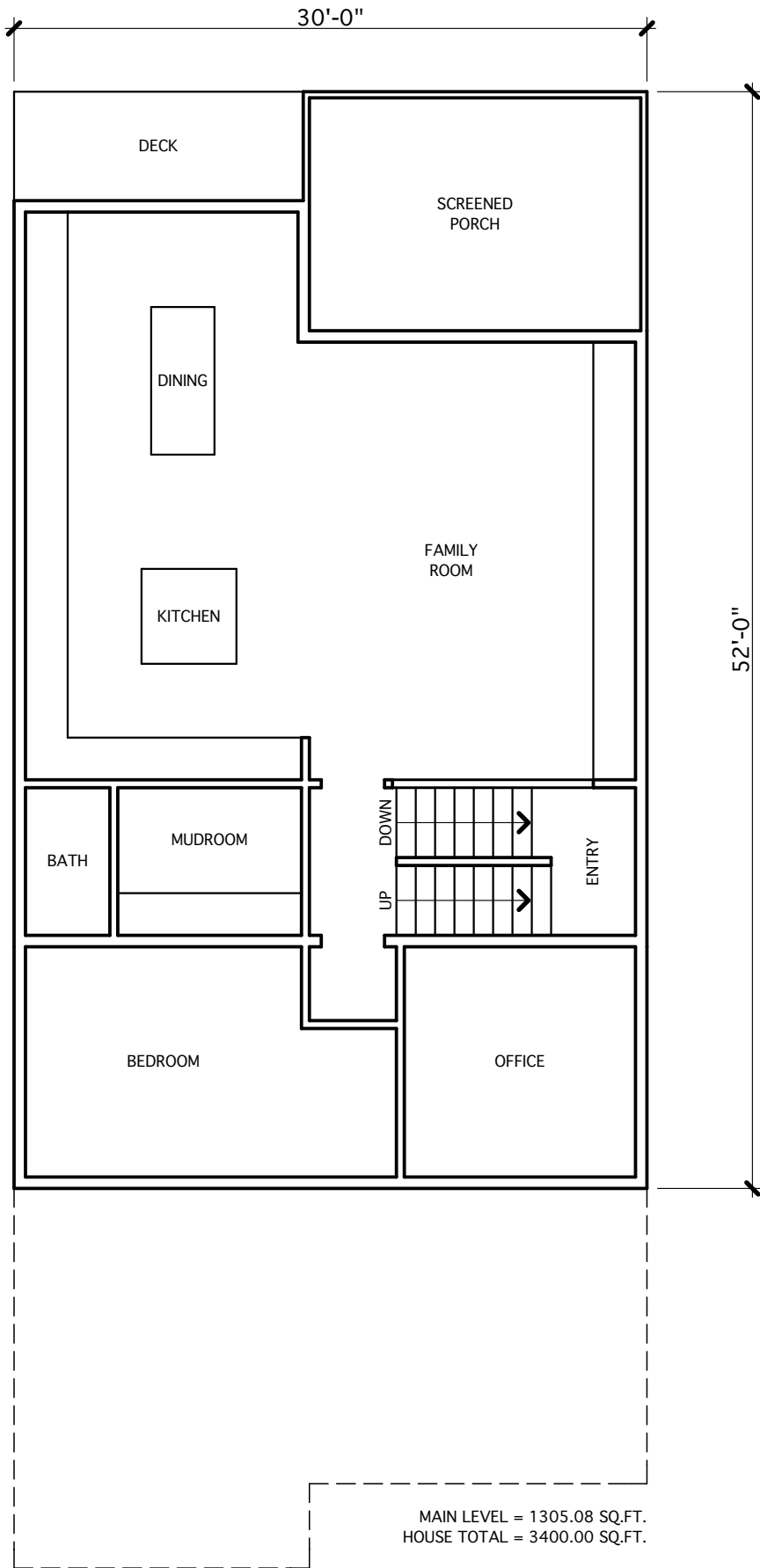
# PLAN - lower level study

SCALE: 1/8" = 1'-0"

This drawing is provided as an instrument of Service by Kell Architects and is intended for use on this project only. Kell Architects is the author and the owner of these instruments and retains all common law statutory and other reserved rights, including copyright. Any reproduction, use or disclosure of the designs, arrangements or information contained herein without the prior written consent of Kell Architects is strictly prohibited.

© Kell Architects 2019

Date: Variance - 31 Oct 2019



**kell.**  
architect(s)

821 Raymond Ave., Ste. 400  
St. Paul, Minnesota 55114  
612-812-5687

www.kellarchitects.com

3244 SANDEEN ROAD

1  
02

# PLAN - main level study

SCALE: 1/8" = 1'-0"

This drawing is provided as an instrument of Service by Kell Architects and is intended for use on this project only. Kell Architects is the author and the owner of these instruments and retains all common law statutory and other reserved rights, including copyright. Any reproduction, use or disclosure of the designs, arrangements or information contained herein without the prior written consent of Kell Architects is strictly prohibited.

© Kell Architects 2019

Date: Variance - 31 Oct 2019



UPPER LEVEL = 1560.00 SQ.FT.  
HOUSE TOTAL = 3400.00 SQ.FT.

821 Raymond Ave., Ste. 400  
St. Paul, Minnesota 55114  
612-812-5687  
www.kellarchitects.com

3244 SANDEEN ROAD

1  
03

# PLAN - upper level study

SCALE: 1/8" = 1'-0"

This drawing is provided as an instrument of Service by Kell Architects and is intended for use on this project only. Kell Architects is the author and the owner of these instruments and retains all common law statutory and other reserved rights, including copyright. Any reproduction, use or disclosure of the designs, arrangements or information contained herein without the prior written consent of Kell Architects is strictly prohibited.

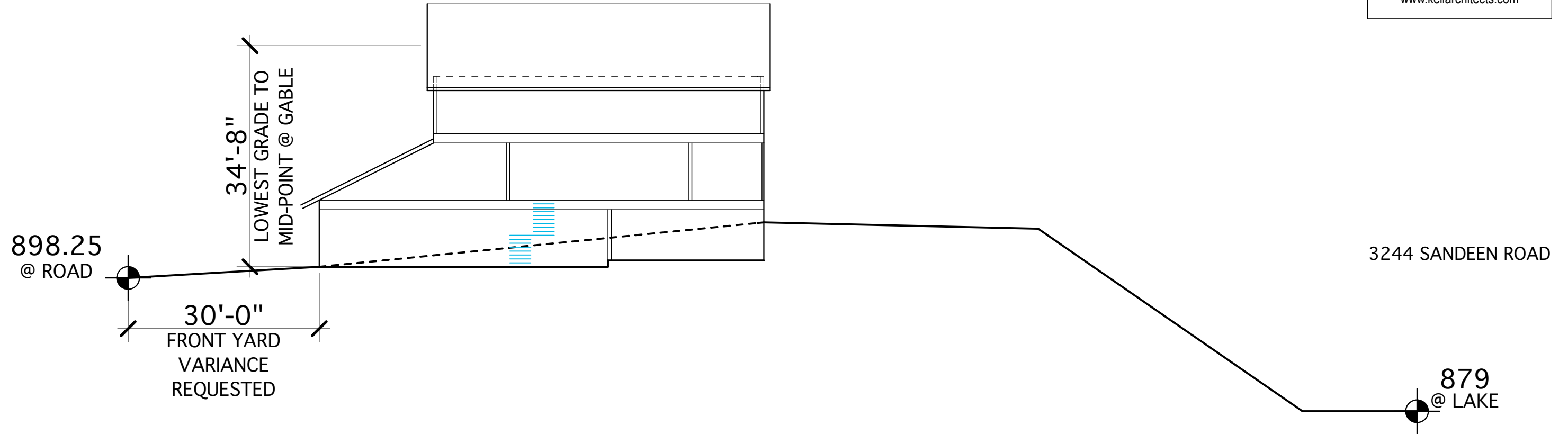
© Kell Architects 2019

Date: Variance - 31 Oct 2019



821 Raymond Ave., Ste. 400  
St. Paul, Minnesota 55114  
612-812-5687

www.kellarchitects.com



1  
04

# SITE SECTION - study

SCALE: 1/16" = 1'-0"

This drawing is provided as an instrument of Service by Kell Architects and is intended for use on this project only. Kell Architects is the author and the owner of these instruments and retains all common law statutory and other reserved rights, including copyright. Any reproduction, use or disclosure of the designs, arrangements or information contained herein without the prior written consent of Kell Architects is strictly prohibited.

© Kell Architects 2019

Date: Variance - 31 Oct 2019